

TW-P



TW-M



✓ **Standard**

⊗ **Options**

	EN GJS500-7 (*) EN GJL250	-
	ISO PN16	ISO PN10 ANSI150
	BSP F	NPT F

Pulse emitter

+ **EMT**

Istant flow display

+ **IST-C**

+ **IST-S**



Dati tecnici

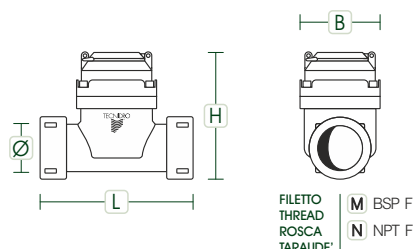
Technical data / Datos técnicos / Données techniques

Series **TW**

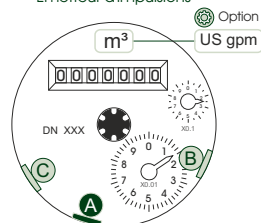


FILETTO / THREAD / ROSCA / TARAUDE'

	DN-Ø	L	H	B	P	Q3	R
	(mm) - (inch)	(mm)	(mm)	(mm)	(Kg)	(m³/h)	(Q ₃ /Q ₁)
(*)	Ø2"	200	215	130	4.5	25.0	25
(*)	Ø3"	225	230	130	7.3	40.0	25

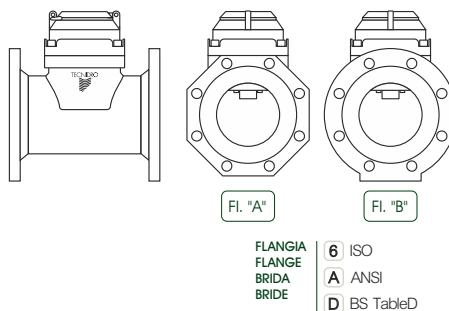


Emettitore d'impulsi
Pulse emitter
Emissor de pulsos
Emetteur d'impulsions



FLANGIA / FLANGE / BRIDA / BRIDE

	DN-Ø	L	H	B	P	Q3	R	Fl.
	(mm) - (inch)	(mm)	(mm)	(mm)	(Kg)	(m³/h)	(Q ₃ /Q ₁)	
(*)	50 2"	200	250	165	7.1	25.0	25	B
(*)	65 2½"	200	265	185	10.0	40.0	25	B
	80 3"	225	280	190	7.8	63.0	25	A
	100 4"	250	290	210	10.2	100.0	25	A
	125 5"	250	310	240	13.5	160.0	25	A
	150 6"	300	340	270	16.2	250.0	25	A
	200 8"	350	380	336	27.5	400.0	25	A
	250 10"	450	445	420	51.0	630.0	25	A
(*)	300 12"	500	455	460	85.0	1.000.0	25	B



	DN-Ø	A	B	C
	(mm) - (inch)	K (l/pulse)		
	50 2"	100	-	10
	65 2½"			
	80 3"			
	100 4"	100	1.000	-
	125 5"	1.000	-	100
	150 6"	1.000	10.000	-
	200 8"			
	250 10"			
	300 12"			

Dati metrologici

Metrological data / Datos metrologicos / Données métrologiques



NORME
STANDARDS
NORMAS
NORMES

ISO 16399



PRECISION
ACCURACY
PRECISION
PRÉCISION

Q₂ ÷ Q₄ ± 2%
Q₁ ÷ Q₂ ± 5%



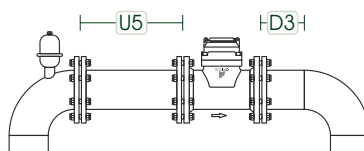
TEMPERATURE
TEMPERATURES
TEMPERATURAS
TEMPÉRATURES

0° ÷ +50 °C

Installazione

Installation / Instalación / Installation

HORIZONTAL



VERTICAL

