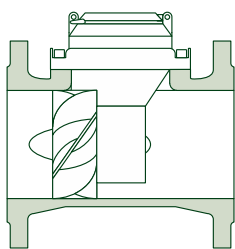


Woltman Water Meters

AW Series

P_{max} 16 bar



Standard

Options



EN GJS400
ASTM A536



ISO PN16

ISO PN10
ANSI150



MI-001
2014/32/UE

MID

AWD

DN 50÷200



Multi-Jet Water Meters

MW

DN15÷50

Bulk Water Meters

AW

DN ≥ 250



Pulse emitter

+ EMT



Istant flow display

+ IST-C/S

(>> Pag.35 >>)



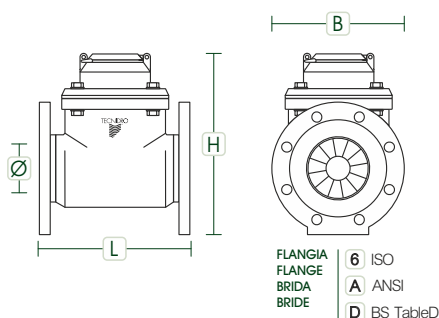
Dati tecnici

Technical data / Datos técnicos / Données techniques

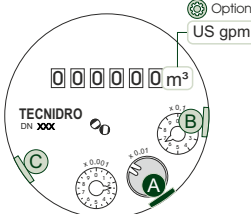
Series AWD/AW

FLANGIA / FLANGE / BRIDA / BRIDE							AWD
DN-Ø	L	H	B	P	Q3	R	
(mm) - (inch)	(mm)	(mm)	(mm)	(Kg)	(m³/h)	(Q ₃ /Q ₁)	
50 2"	200	215	165	8.0	25/40	63/100	
65 2½"	200	225	185	9.6	40/63	80/125	
80 3"	225	245	200	11.4	63/100	100/160	
100 4"	250	255	222	12.7	100/160	125/200	
125 5"	250	285	253	17.3	250	160	
150 6"	300	360	290	35.0	250/400	100/160	
200 8"	350	390	345	51.5	630	125	

FLANGIA / FLANGE / BRIDA / BRIDE							AW
DN-Ø	L	H	B	P	Q3	R	
(mm) - (inch)	(mm)	(mm)	(mm)	(Kg)	(m³/h)	(Q ₃ /Q ₁)	
250 10"	450	660	460	71.5	630	40	
300 12"	500	660	500	88.0	1.000	40	
400 16"	600	830	630	199.0	1.600	40	
500 20"	800	930	740	340.0	2.500	40	
600 24"	500	900	840	330.0	2.500	40	



Emettore d'impulsi
Pulse emitter
Emisor de pulsos
Emetteur d'impulsions



AWD	CERTIFIED
DIRTY WATER	ISO 16399
CLEAR WATER	OIML R49 ISO 4064

DN-Ø (mm) - (inch)	K (l/pulse)		
	A	B	C
50 2"	100	-	-
65 2½"			
80 3"			
100 4"			
125 5"			
150 6"	1.000	-	-
200 8"			
≥ 250 10"	≥ 10.000		

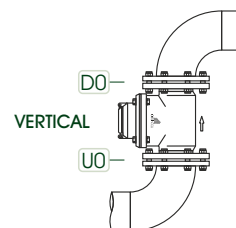
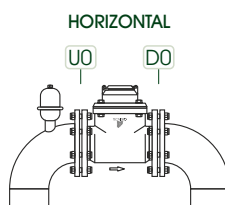
Dati metrologici

Metrological data / Datos metrologicos / Données métrologiques

NORME STANDARDS NORMAS NORMES	ISO 16399 OIML R49 ISO 4064
PRECISIONE ACCURACY PRECISIÓN PRÉCISION	Q2 ÷ Q4 ± 2% Q1 ÷ Q2 ± 5%
TEMPERATURE TEMPERATURES TEMPERATURAS TEMPÉRATURES	0° ÷ +50 °C

Installazione

Installation / Instalación / Installation



Dati tecnici

Technical data / Datos técnicos / Données techniques

Series MW

FILETTO / THREAD / ROSCA / TARAUE'							MW
DN-Ø	L	H	B	P	Q3	R	
(mm) - (inch)	(mm)	(mm)	(mm)	(Kg)	(m³/h)	(Q ₃ /Q ₁)	
15 ½"	145	195	96	1.6	2.50	40	
20 ¾"	160	195	96	1.8	4.00	÷	
25 1"	260	200	100	3.2	6.30	100	

FILETTO / THREAD / ROSCA / TARAUE'							MW
DN-Ø	L	H	B	P	Q3	R	
(mm) - (inch)	(mm)	(mm)	(mm)	(Kg)	(m³/h)	(Q ₃ /Q ₁)	
32 1¼"	260	200	100	3.5	10.0	40	
40 1½"	300	210	136	6.1	16.0	÷	
50 2"	300	220	136	9.7	25.0	100	

